



3

OZONE WATER ORAL IRRIGATOR USER MANUAL

Safety instructions

To ensure safety, please read and observe the following safety tips carefully

- Do not disassemble this product or change the parts of this product, so as not to damage this product or get an electric shock, so that the warranty is invalid.
- This product is only used for oral hygiene and cleaning, oral care to brighten and whiten teeth, please do not use for other purposes.
- Do not immerse this product in water, so as not to fail or cause fire, electric shock, explosion and other hazards.
- If the charger accidentally falls into the water, unplug the power plug before picking up the product.
- Do not plug this product with wet hands.
- Before connecting the power plug, please check whether the voltage marked at the bottom of the product conforms to the local used voltage.
- Please unplug the power plug before maintenance.
- Do not place products in hot or humid places.
- Consult your dentist if gums bleed after use or if bleeding or other discomfort occurs after one week of use.
- This product is not suitable for children, infants and non-operators unless such people are supervised or instructed by their guardians in the use of this product; Please keep it out of reach of children and babies, and do not use it as a toy.
- There are no replaceable or repairable parts in this product. If you need repair, please return it to the manufacturer.
- After charging, be sure to unplug the power plug to avoid danger.
- If you have had oral surgery in the last two months, please consult your doctor before using it.
- This product meets the safety standards of battery devices. For questions involving pacemakers or other implanted devices, please consult your doctor before using them.

Characteristic

Ozone water oral irrigator is an upgraded version of conventional oral irrigators, an epoch making product that solves delicate oral problems that conventional irrigators are unable to deal with. The electrolytic ozone generator is the core part of the Ozone water oral irrigator, which generates low concentration ozone with tap water and protect oral health.

NOTE: Ozone water features a fishy smell. Effective in destroying harmful anaerobic bacteria, Ozone water can remove the bad breath caused by oral hygiene problems, protect and improve the oral mucosa environment, and make the oral environment cleaner and healthier.

Notes

- 1.If the TDS of TAP water in some areas is lower than 60, in order to effectively increase the concentration of ozone water, half a spoonful of edible fine salt (Equipped spoon) can be added to a water tank filled with water, shaken and dissolved, and then used,More thorough oral hygiene and cleaning.
- 2.When the battery is exhausted, the machine stops running and the fourth gear light flashes. Please charge the oral irrigator for continued use. The charging time is 4 hours. Before charging, please ensure that there is no liquid residue in the charging port.
- 3.Before using the product, there may be liquid residue inside (water tank,suction pipe, etc.), which is the residual water of water flow test, which is a normal phenomenon and has no impact on health. Please feel free to use it.
- 4.The water used in this product is unfiltered city tap water. Pure water and distilled water are not allowed to be used.
- 5.Do not add any substance to the tap water in the water tank, except for the specified amount of edible fine salt.
- 6.There is an electrolytic ozone water generator inside the product. The water produced contains main antibacterial factors such as O_3 , $HClO$, O , H_2O_2 , etc. It is normal to have unique fishy smell and trace chlorine smell. Please feel free to use it.

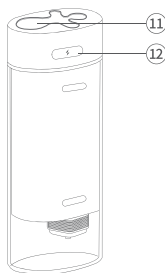
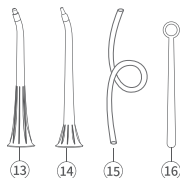
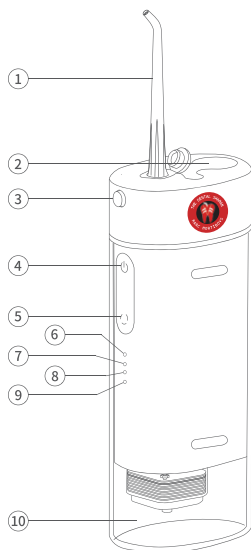
First time use

Charging unit prior to first use.

If you are using it for the first time or have not used it for a long time, and the water cannot come out normally, please press the switch button and hold the nozzle tip with your mouth to suck out the water, then it can be used normally.

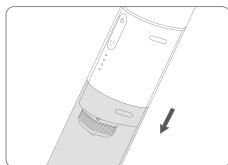


Product description

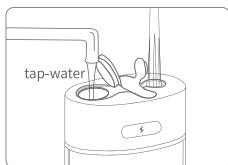


- ① Standard nozzle
- ② Reservoir Fill Cover (Inside can be with Tip)
- ③ Tip Eject Button
- ④ Switch button
- ⑤ Mode button
- ⑥ Strong Mode
Suitable for heavy and self-cleaning
- ⑦ Standard Mode
Daily rinse teeth
- ⑧ Massage Mode
Variable-frequency water flosser to care gums
- ⑨ Soft Mode
Suitable for sensitive gums
- ⑩ Water tank
- ⑪ Reservoir Fill
- ⑫ Charging port (Type-C)
- ⑬ Orthodontic nozzle
- ⑭ Pik Pocket Tip
- ⑮ Self Cleaning Tube
- ⑯ Equipped spoon

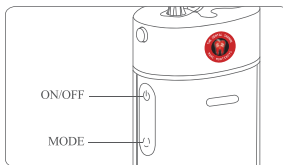
Operating Instructions



Pull down on water tank ,unit will “click” into place when fully extended.



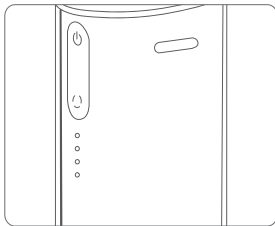
Insert tip at the top of the unit. Press firmly until the tip clicks into place. Open reservoir fill cover and fill lower than 40 °C water



Water flosser with ozone water generator

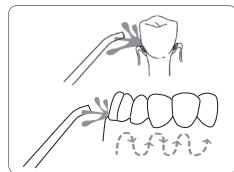
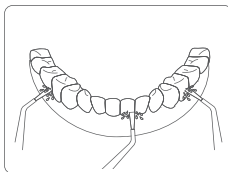
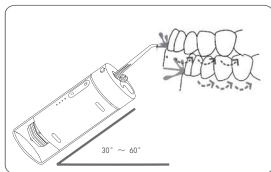
1. Define the function of the double buttons, press the switch button; the water flosser starts working at the same time
The ozone water electrolysis module also starts electrolysis at the same time. Then press the switch key to turn off the water flosser, at the same time, the power supply of the electrolysis module is also turned off.

2. The bottom one is the mode button, when all 4 lights are off, press the mode button, display the current mode, press the mode button again, switch to the next mode,
Clean Mode -the first light is on, Standard Mode- the second light is on, Pulse Mode- the third light is on, Sensitive Mode- the fourth light is on, Switch between four modes, mode switching can be performed before and after booting



Power display:

When the power is turned off or the mode light is off, it will display the approximate power (for 3-5 seconds), and the 1st-4th light will be on. It is fully charged, the power is 81-100%, the 2nd to 4th lights are on, the power is 61-80%, the 3rd-4th light is on, the power is 41-60%, the 4th light is on, the power is 21-40%, 4 lights flash slowly at the same time, the battery is 10-20%, reminding that the battery is running out, please charge it in time. 4 LEDs blink quickly at the same time, power off, press any key, only 4 LEDs flash quickly for 5 seconds, the product does not turn on, To be activated after charging.



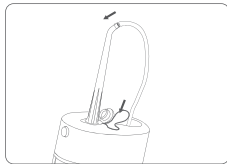
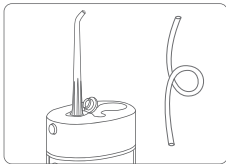
Angle of use

Bend over the washstand, click the mode button, adjust it to the required gear, put the nozzle into the mouth, tilt the body 30° ~ 60° and aim at the gums and teeth, and press the switch button to start the machine.

Operation mode

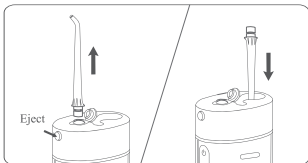
The jet water is at a 90-degree angle with the gums, and the lips are slightly closed to avoid water measurement. For good results, please start from the molars (posterior teeth) and start cleaning towards the incisors. Slide the spray head along the gum line and stop between the teeth for a short time until the gums and between the teeth are cleaned.

Water tank cleaning

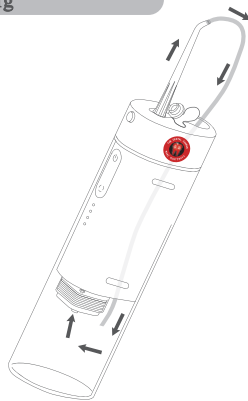


Take out the self-cleaning tube and insert one end into the tip and the other end into the injection water port

Turn on the switch after inserting the self-cleaning tube. Ozone water circulates in the water tank for 3 minutes and stops automatically. Solve the self-cleaning and sterilization function in the water tank. No need for daily cleaning and once a week is enough.



After use, push the tip eject button and put it into reservoir fill.



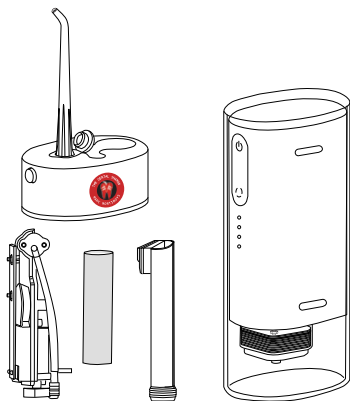
Common Problems and Solutions

Problems	Cause	Treatment methods
Leakage between nozzle and main engine	The inner sealing ring of the nozzle fixing seat is damaged; The nozzle is not installed in place	Contact the seller for maintenance; Install the nozzle in place
Pump inlet leakage	Damaged sealing ring or impurities at inlet edge	Contact vendor for repair
Water tank leak	Damage of sealing ring	Replace the sealing ring and contact the seller for repair
Insufficient pressure	Low voltage use	Use when fully charged
Device failed to start	Low voltage use	Fully charged or contact the vendor for repair
The device cannot be turned on	The pcb board is protected	Charge for three seconds and activate the pcb board before starting up

Battery recycling

This equipment contains lithium battery. Please recycle the battery at the end of life as follows:

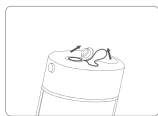
1. Press the release button to exit the nozzle;
2. Pull out the bottom cover and top cover;
3. Press the positioning buckle to take out the movement;
4. Cutting the lead wires connecting the movement and the shell;
5. Cut the battery lead and take out the battery.



Notes:

1. To avoid short circuit of the positive and negative terminals of the removed battery, tape the front end of the lead wire to insulate it
2. Please do not discard the battery at will. The battery should be sent to the nearest recycling center.

Warm Note



***Please open the cover of the water filling port before sliding down or sliding up the water tank.**



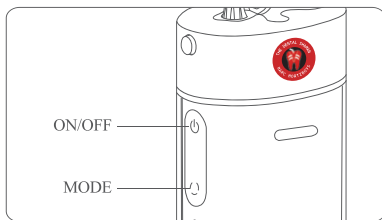
Wrong Operation

Do not put away water tank as picture to avoid accidental pinching of hands.



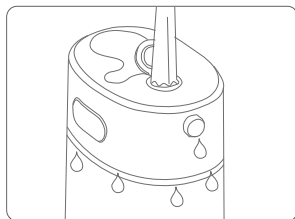
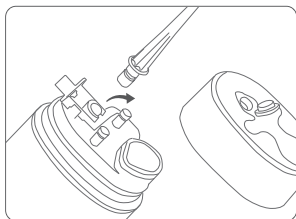
Correct Operation

Place your palm flat on the top of the flosser when storing the water tank. Press down gently and slowly until the water tank and the top fit each other.



For those sensitive to the taste of ozone, it is recommended to use the ozone function only two or three times a week before sleep. To switch off the ozone feature, press and hold the mode button for 5 seconds, allowing the flosser to use regular tap water without ozone. If the ozone function is needed again, simply press and hold the mode button for another 5 seconds to reactivate it. This key operation makes it easy to toggle the ozone generator on or off based on individual preferences.

Special Note



When starting the machine directly without inserting the tip, water will spray inside the lid. The accumulated water in the top cover will come out from the overflow seam to prevent bacteria from accumulating in top.

Common Problems and Solutions

Important note:

According to the national "Warranty Card" service regulations, this card is the Warranty card of Ozone oral irrigator. With this card and valid sales certificate, you can enjoy the Warranty Service Policy stipulated by the state. Please keep this card properly and show it when you need three guarantees.

Product return policy

- (1) If the product fails within 7 days from the date of sale, consumers can choose to return, exchange or repair it.
- (2) If the product fails within 15 days from the date of sale, consumers can choose to exchange or repair it

Product warranty policy:

1.Warranty period:

From the date of purchase, under normal use, if the product has quality problems, the whole machine will be guaranteed free of charge within one year.

2.Warranty coverage:

From the date of purchase (subject to invoice or valid sales voucher), the failure occurred during the warranty period and confirmed to be normal use by the after-sales service center of our company, and the failure caused by the quality problem of the product itself shall be guaranteed free of charge .

3.Exclusions:

- (1)There is no three-guarantee service card, no valid sales certificate and the production date exceeds 1 year;
- (2)The three-guarantee service card or sales voucher is smeared or changed, and the product content stated on the three-guarantee service card and sales voucher is inconsistent with the physical product;
- (3)Man-made damage (for example, the user disassembles the machine by himself, makes inappropriate connection and use, accesses the power supply with inappropriate voltage, fails to use according to the instructions etc);

- (4) Damage caused by handling, falling and other accidents, and damage caused by force majeure such as natural disasters;
- (5) It has been repaired and modified by non-authorized service units or individuals of the Company;
- (6) Quality problems are limited to performance failures, excluding subjective objections of users to products;
- (7) Natural aging, wear and consumption of consumable materials such as shells.

Warranty agreement:

The following situations do not belong to the warranty scope of our company:

1. The warranty period has expired.
2. Damage caused by force majeure or accident.
3. Disassemble or repair without the authorization of the company.
4. Accidentally lost the accessory package or intentionally damaged it.
5. Tearing or altering labels, body codes, and anti-counterfeiting marks.
6. The warranty period is one year.



Product warranty card

User name: _____ Telephone: _____

User Address : _____

Product model : _____ Color : _____

Purchase date : _____

Maintenance date : _____

Purchase platform : _____